

FACE (includes Eye and Ear)

| AIS 2005 | Injury Description | ⇒AIS98 | ⇐AIS98 | FCI |
|---|--|----------|----------|-----|
| WHOLE AREA | | | | |
| Use one of the following two descriptors when such vague information is the only information available. While these descriptors identify the occurrence of a facial injury, they do not specify its severity. | | | | |
| 200099.9 | Injuries to the Face NFS | 215099.9 | 215099.9 | |
| 200999.9 | Died of facial injury without further substantiation of injuries or no autopsy confirmation of specific injuries | 215999.9 | 215999.9 | |
| Use this category if penetrating injury does not involve internal structures. Assign to External body region for calculating an ISS. If underlying anatomical structures are involved, code documented diagnoses only; do not use these generic descriptors. | | | | |
| 216000.1 | Penetrating injury NFS | 216000.1 | 216000.1 | 5 |
| 216002.1 | minor; superficial | 216002.1 | 216002.1 | 5 |
| 216004.2 | with tissue loss >25cm ² | 216004.2 | 216004.2 | 5 |
| 216006.3 | with blood loss >20% by volume | 216006.3 | 216006.3 | 5 |
| 216008.4 | massive destruction of whole face including both eyes ^a | None | None | 1 |
| Assign AIS code 216008.4 to Face body region for calculating an ISS. | | | | |

^a New descriptor in AIS 2005

| AIS 2005 | Injury Description | ⇒AIS98 | ⇐AIS98 | FCI |
|---|---|----------|----------|-----|
| Use the following section for blunt soft tissue injury to the face. Assign to External body region for calculating an ISS. | | | | |
| 210099.1 | Skin/subcutaneous/muscle NFS | 210099.1 | 210099.1 | 5 |
| 210202.1 | abrasion | 210202.1 | 210202.1 | 5 |
| 210402.1 | contusion; hematoma | 210402.1 | 210402.1 | 5 |
| 210600.1 | laceration NFS | 210600.1 | 210600.1 | 5 |
| 210602.1 | minor; superficial | 210602.1 | 210602.1 | 5 |
| 210604.2 | major; >10cm long <u>and</u> into subcutaneous tissue | 210604.2 | 210604.2 | 5 |
| 210606.3 | blood loss >20% by volume | 210606.3 | 210606.3 | 5 |
| 210800.1 | avulsion NFS | 210800.1 | 210800.1 | 5 |
| 210802.1 | minor; superficial; ≤25cm ² | 210802.1 | 210802.1 | 5 |
| 210804.2 | major; >25cm ² | 210804.2 | 210804.2 | 5 |
| 210806.3 | blood loss >20% by volume | 210806.3 | 210806.3 | 5 |
| VESSELS | | | | |
| 220099.9 | Vascular Injury in Face NFS^f | None | None | |
| 220200.1 | External carotid artery branch(es) laceration NFS [includes facial, temporal, and internal maxillary] | 220200.1 | 220200.1 | 5 |
| 220202.1 | minor; superficial | 220202.1 | 220202.1 | 5 |
| 220204.3 | major; transection; blood loss >20% by volume | 220204.3 | 220204.3 | 5 |

^f New descriptor in AIS 2005 that allows classification of trauma by body region, but does not allow assigning a severity code.

| AIS 2005 | Injury Description | ⇒AIS98 | ⇐AIS98 | FCI |
|------------------------|--|-----------------------|----------|-----|
| NERVES | | | | |
| 230299.1 | Optic Nerve NFS | 230299.1 | 230299.1 | 3 |
| | Use this category for intraorbital portion only. For intracranial portion or if location is unknown, code under Cranial Nerves in Head. | | | |
| 230202.2 | contusion | 230202.2 | 230202.2 | 3 |
| 230203.2 | bilateral ^c | 230202.2 | None | 2 |
| 230204.2 | laceration | 230204.2 | 230204.2 | 2 |
| 230205.3 | bilateral ^c | 230204.2 ^b | None | 2 |
| 230206.2 | avulsion | 230206.2 | 230206.2 | 2 |
| 230207.3 | bilateral ^c | 230206.2 ^b | None | 2 |
| INTERNAL ORGANS | | | | |
| 240299.1 | Ear NFS | 240299.1 | 240299.1 | 3 |
| | Code ear amputation as skin avulsion according to its level of severity. | | | |
| 240204.1 | Ear Canal injury | 240204.1 | 240204.1 | 5 |
| 240208.1 | Inner or Middle Ear injury NFS | 240208.1 | 240208.1 | 2 |
| 240207.2 | bilateral ^c | 240208.1 ^b | None | 2 |
| 240206.1 | injury involving dizziness ^a | 240208.1 | None | 4 |
| 240205.1 | injury involving tinnitus ^a | 240208.1 | None | 3 |
| 240212.1 | Ossicular chain (ear bone) dislocation | 240212.1 | 240212.1 | 2 |
| 240213.2 | bilateral ^c | 240212.1 ^b | None | 2 |
| 240216.1 | Tympanic membrane (eardrum) rupture | 240216.1 | 240216.1 | 3 |
| 240220.1 | Vestibular apparatus injury | 240220.1 | 240220.1 | 4 |

^a New descriptor in AIS 2005

^b Change in severity code in AIS 2005

^c In previous editions of AIS, with few exceptions, each injury was coded separately. AIS 2005 introduces “bilateral”. Some bilateral injuries may affect severity levels, and, therefore, the ISS for patients with these injuries.

| AIS 2005 | Injury Description | ⇒AIS98 | ⇐AIS98 | FCI |
|----------|---|-----------------------|----------|-----|
| 240499.1 | Eye NFS | 240499.1 | 240499.1 | 3 |
| 240402.2 | Eye avulsion; enucleation | 240402.2 | 240402.2 | 2 |
| 240403.3 | bilateral ^c | 240402.2 ^b | None | 2 |
| 240408.1 | Canaliculus (lacrimal/tear duct) laceration | 240408.1 | 240408.1 | 5 |
| 240599.1 | Choroid NFS | 240412.1 | None | 5 |
| 240502.1 | rupture ^e | 240412.1 | 240412.1 | 5 |
| 240504.1 | peripheral - not involving macula | 240412.1 | None | 5 |
| 240506.1 | central – involving macula | 240412.1 | None | 3 |
| 240508.1 | detachment ^a | 240412.1 | None | 5 |
| 240510.1 | hemorrhage ^a | 240412.1 | None | 5 |
| 240416.1 | Conjunctiva injury | 240416.1 | 240416.1 | 5 |
| 240699.1 | Cornea NFS | 240699.1 | 240699.1 | 3 |
| 240602.1 | abrasion | 240602.1 | 240602.1 | 5 |
| 240603.1 | burn, thermal or chemical ^a | 240699.1 | None | 5 |
| 240604.1 | contusion ^e | 240604.1 | 240604.1 | 5 |
| 240610.1 | hyphema NFS ^e | 240604.1 | 240604.1 | 5 |
| 240611.1 | minor; ≤50% of anterior chamber | 240604.1 | None | 5 |
| 240612.1 | major; >50% of anterior chamber | 240604.1 | None | 5 |
| 240620.1 | laceration NFS ^e | 240606.1 | 240606.1 | 3 |
| 240621.1 | not involving central 3mm of cornea | 240606.1 | None | 3 |
| 240622.1 | without prolapse | 240606.1 | None | 3 |
| 240623.1 | with prolapse | 240606.1 | None | 3 |
| 240624.1 | involving central 3mm of cornea | 240606.1 | None | 3 |
| 240625.1 | without prolapse | 240606.1 | None | 3 |
| 240626.1 | with prolapse | 240606.1 | None | 3 |
| 240799.1 | Injury with retained Intraocular Foreign Body ^a | 240499.1 | None | 3 |
| 240789.1 | anterior chamber ^a | 240499.1 | None | 3 |
| 240779.1 | posterior chamber ^a | 240499.1 | None | 3 |

^a New descriptor in AIS 2005

^b Change in severity code in AIS 2005

^c In previous editions of AIS, with few exceptions, each injury was coded separately. AIS 2005 introduces “bilateral”. Some bilateral injuries may affect severity levels and, therefore, the ISS for patients with those injuries.

^e In AIS 98, this injury description had only one severity level. In AIS 2005, it has several.

| AIS 2005 | Injury Description | ⇒AIS98 | ⇐AIS98 | FCI |
|-----------------|---|---------------|---------------|------------|
| | Eye (continued) | | | |
| 240800.1 | Lens NFS^a | 240499.1 | None | 5 |
| 240802.1 | capsular rupture NFS ^a | 240499.1 | None | 5 |
| 240804.1 | anterior capsule ^a | 240499.1 | None | 5 |
| 240806.1 | posterior capsule ^a | 240499.1 | None | 5 |
| 240808.1 | both anterior and posterior capsules ^a | 240499.1 | None | 5 |
| 240812.1 | dislocation; subluxation ^a | 240499.1 | None | 5 |
| 240814.1 | anterior segment ^a | 240499.1 | None | 5 |
| 240816.1 | posterior segment ^a | 240499.1 | None | 5 |
| 240999.1 | Macula NFS^a | 240499.1 | None | 5 |
| 240902.1 | contusion; edema ^a | 240499.1 | None | 5 |
| 240904.2 | hole ^a | 240499.1 | None | 3 |
| 241099.1 | Retina NFS^a | 241000.1 | None | 5 |
| 241000.1 | laceration; tear NFS ^e | 241000.1 | 241000.1 | 3 |
| 241002.1 | minor; ≤90° | 241000.1 | None | 5 |
| 241004.1 | major; >90° | 241000.1 | None | 3 |
| 241006.2 | detachment NFS ^e | 241002.2 | 241002.2 | 5 |
| 241008.2 | with macula attached | 241002.2 | None | 5 |
| 241010.2 | with macula detached | 241002.2 | None | 3 |
| 241299.1 | Sclera [includes globe] NFS | 241200.1 | None | 5 |
| 241200.2 | laceration; rupture ^e | 241202.2 | 241202.2 | 5 |
| 241201.2 | anterior to ora serrata | 241202.2 | None | 5 |
| 241202.2 | without prolapse | 241202.2 | None | 5 |
| 241203.2 | with prolapse | 241202.2 | None | 5 |
| 241204.2 | posterior to ora serrata but anterior to equator | 241202.2 | None | 5 |
| 241205.2 | without prolapse | 241202.2 | None | 5 |
| 241206.2 | with prolapse | 241202.2 | None | 5 |
| 241207.2 | posterior to equator | 241202.2 | None | 5 |
| 241208.2 | without prolapse | 241202.2 | None | 5 |
| 241209.2 | with prolapse NFS | 241202.2 | None | 3 |

^a New descriptor in AIS 2005

^e In AIS 98, this injury description had only one severity level. In AIS 2005, it has several.

| AIS 2005 | Injury Description | ⇒AIS98 | ⇐AIS98 | FCI |
|-----------------|--|---------------|---------------|------------|
| 241499.1 | Eye (continued) Uvea injury | 241499.1 | 241499.1 | 3 |
| 241699.1 | Vitreous NFS ^e | 241699.1 | 241699.1 | 3 |
| 241601.1 | hemorrhage | 241699.1 | None | 5 |
| 241602.1 | retina visible | 241699.1 | None | 5 |
| 241603.1 | retina not visible | 241699.1 | None | 5 |
| 241604.1 | detachment | 241699.1 | None | 5 |
| 243099.1 | Mouth injury | 243099.1 | 243099.1 | 5 |
| 243199.1 | Palate NFS ^a | 243099.1 | None | 5 |
| 243101.1 | laceration ^a | 243099.1 | None | 5 |
| 243102.2 | fracture ^a | 243099.1 | None | 5 |
| 243299.1 | Gingiva (gum) NFS | 243299.1 | 243299.1 | 5 |
| 243202.1 | contusion | 243202.1 | 243202.1 | 5 |
| 243204.1 | laceration | 243204.1 | 243204.1 | 5 |
| 243206.1 | avulsion | 243206.1 | 243206.1 | 5 |
| 243400.1 | Tongue laceration NFS | 243400.1 | 243400.1 | 5 |
| 243402.1 | minor; superficial | 243402.1 | 243402.1 | 5 |
| 243404.2 | deep; extensive | 243404.2 | 243404.2 | 3 |
| JOINTS | | | | |
| 251699.1 | Temporomandibular joint NFS | 251699.1 | 251699.1 | 5 |
| 251604.2 | dislocation | 251604.2 | 251604.2 | 5 |

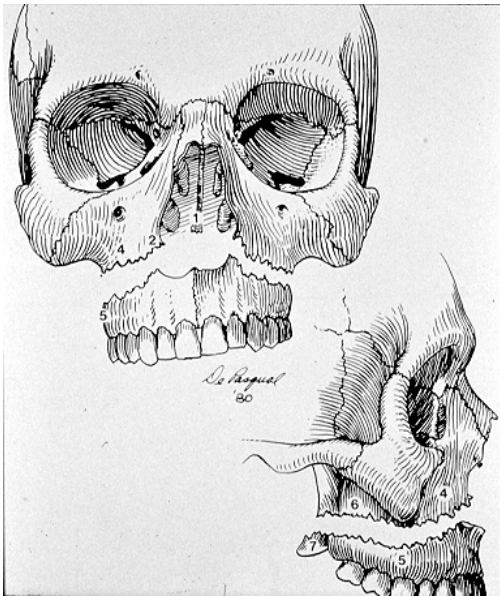
^a New descriptor in AIS 2005

^e In AIS 98, this injury description had only one severity level. In AIS 2005, it has several.

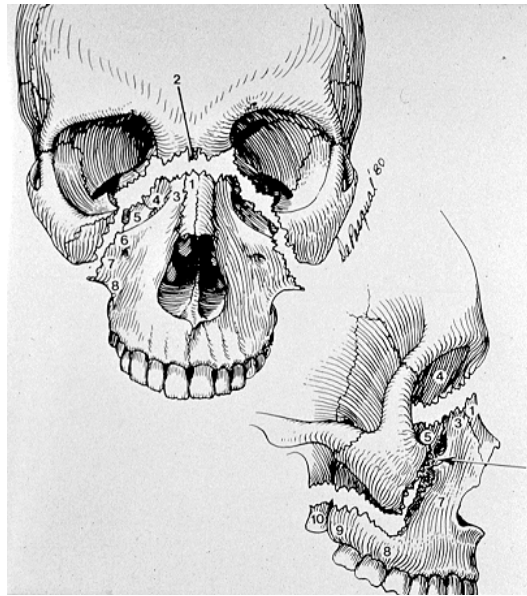
| AIS 2005 | Injury Description | ⇒AIS98 | ⇐AIS98 | FCI |
|-----------------|--|----------|----------|-----|
| SKELETAL | | | | |
| 250200.2 | Alveolar ridge fracture with or without injury to teeth Do not code teeth separately when these occur simultaneously. | 250200.2 | 250200.2 | 5 |
| 250400.1 | Facial bone(s) fracture NFS | 250400.1 | 250400.1 | 5 |
| 250600.1 | Mandible fracture NFS Code bilateral as single injury. | 250600.1 | 250600.1 | 5 |
| 250602.1 | closed but NFS as to site | 250602.1 | 250602.1 | 5 |
| 250603.1 | condyle ^a | 250602.1 | None | 5 |
| 250604.1 | coronoid ^a | 250602.1 | None | 5 |
| 250605.1 | angle ^a | 250602.1 | None | 5 |
| 250606.1 | symphysis/parasymphysis ^a | 250602.1 | None | 5 |
| 250607.1 | body | 250604.1 | 250604.1 | 5 |
| 250608.1 | ramus | 250606.1 | 250606.1 | 5 |
| 250610.2 | open/displaced/comminuted but NFS as to site Any or combination. Displacement must be significant. | 250610.2 | 250610.2 | 5 |
| 250611.2 | condyle ^a | 250610.2 | None | 5 |
| 250612.2 | coronoid ^a | 250610.2 | None | 5 |
| 250613.2 | angle ^a | 250610.2 | None | 5 |
| 250614.2 | symphysis/parasymphysis ^a | 250610.2 | None | 5 |
| 250615.2 | body | 250612.2 | 250612.2 | 5 |
| 250616.2 | ramus | 250614.2 | 250614.2 | 5 |

^a New descriptor in AIS 2005

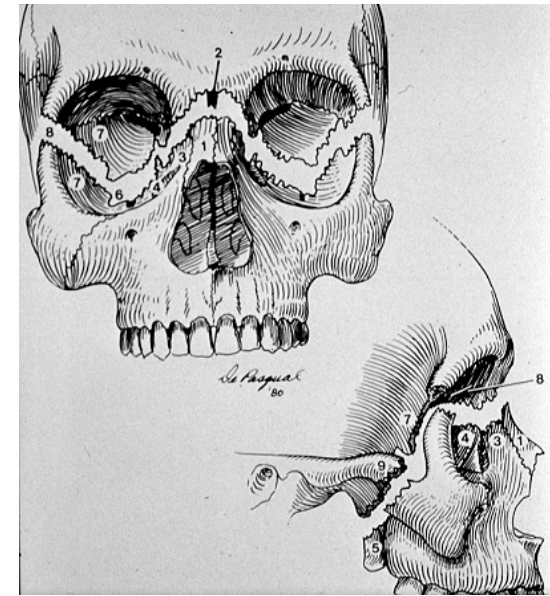
LeFort I



LeFort II



LeFort III



Copyright protected material used with permission of the author and the University of Iowa's Virtual Hospital, www.vh.org

| AIS 2005 | Injury Description | ⇒AIS98 | ⇐AIS98 | FCI |
|----------|---|----------|----------|-----|
| 250800.2 | Maxilla fracture [including maxillary sinus] Code bilateral maxilla fractures as a single injury. | 250800.2 | 250800.2 | 5 |
| 250804.2 | LeFort I | 250804.2 | 250804.2 | 5 |
| 250806.2 | LeFort II | 250806.2 | 250806.2 | 5 |
| 250808.3 | LeFort III | 250808.3 | 250808.3 | 5 |
| 250810.4 | blood loss >20% by volume If a LeFort fracture is bilateral, code as single fracture to the more severe. LeFort II and III fractures, by definition, include nasal fractures; the latter, therefore, are not coded separately. Read “LeFort Fractures” below for coding guidance. | 250810.4 | 250810.4 | 5 |

LeFort Fractures

LeFort 1 – a transverse maxillary fracture through the lower maxilla including the maxillary alveolar process, portion of the maxillary sinus, the hard palate and the lower aspect of the pterygoid plates. Teeth are usually contained in the detached portion of the maxilla.

LeFort II – pyramidal fracture that passes through the nasal bone, lacrimal bone, floor of the orbit, infraorbital margin, across the upper portion of the zygomatic-maxillary suture line, maxillary sinus and pterygoid plate along the lateral wall of the maxilla into the pterygopalatine fossa. The fracture results in a floating maxilla and nose with a possible cribriform plate fracture.

LeFort III – complete separation of the facial bones from their cranial attachments [craniofacial dysjunction]. Fracture passes through the nasofrontal suture, the junction of the ethmoid and frontal bone, the superior orbital fissure, lateral wall of the orbit, zygomaticofrontal and temporal suture, with a high fracture of the pterygoid plate producing a dishface deformity.

| AIS 2005 | Injury Description | ⇒AIS98 | ⇐AIS98 | FCI |
|----------|--|-----------------------|-----------------------|-----|
| 251099.1 | Nose NFS | 251099.1 | 251099.1 | 5 |
| 251000.1 | fracture, closed or NFS | 251002.1 | 251002.1 | 5 |
| 251002.2 | open/displaced/comminuted | 251004.2 | 251004.2 | 5 |
| | Any or combination. Displacement must be significant. | | | |
| 251004.1 | ruptured mucosa/vessels (epistaxis) | 251090.1 | 251090.1 | 5 |
| | Use only in absence of nose or nasal septum fracture. | | | |
| 251006.2 | septum fracture | 251000.1 ^b | None | 5 |
| 251200.2 | Orbit fracture, closed or NFS | 251202.2 | 251202.2 | 5 |
| | Code orbital roof under skull base. | | | |
| 251201.2 | open but NFS as to site | 251204.3 ^b | 251204.3 ^b | 5 |
| 251205.2 | multiple fractures of same orbit, closed or NFS ^a | 251202.2 | None | 5 |
| 251206.2 | open ^a | 251204.3 ^b | None | 5 |
| 251211.2 | orbital rim, closed or NFS ^a | 251202.2 | None | 5 |
| 251212.2 | open NFS | 251204.3 ^b | None | 5 |
| 251213.2 | inferior orbital rim | 251202.2 | None | 5 |
| 251214.2 | open | 251204.3 ^b | None | 5 |
| 251215.2 | superior orbital rim | 251202.2 | None | 5 |
| 251216.2 | open | 251204.3 ^b | None | 5 |
| 251221.2 | orbital floor, closed or NFS ^a | 251202.2 | None | 5 |
| 251222.2 | open | 251204.3 ^b | None | 5 |
| 251223.2 | “blowout” fracture | 251202.2 | None | 5 |
| 251224.2 | open | 251204.3 ^b | None | 5 |
| 251231.2 | medial wall, closed or NFS ^a | 251202.2 | None | 5 |
| 251232.2 | open | 251204.3 ^b | None | 5 |
| 251235.2 | lateral wall, closed or NFS ^a | 251202.2 | None | 5 |
| 251236.2 | open | 251204.3 ^b | None | 5 |

^a New descriptor in AIS 2005

^b Change in severity code in AIS 2005

| AIS 2005 | Injury Description | ⇒AIS98 | ⇐AIS98 | FCI |
|----------|---|-----------------------|-----------------------|-----|
| 251499.1 | Teeth , any number but NFS as to injury See also Alveolar Ridge. | 251499.1 | 251499.1 | 5 |
| 251402.1 | dislocation; subluxation; loosened | 251402.1 | 251402.1 | 5 |
| 251404.1 | fracture | 251404.1 | 251404.1 | 5 |
| 251406.1 | avulsion | 251406.1 | 251406.1 | 5 |
| 251408.1 | any combination of dislocation/fracture/avulsion | 251499.1 | None | 5 |
| 251800.1 | Zygoma fracture [Includes tripod and malar fractures] | 251800.2 ^b | 251800.2 ^b | 5 |
| 251802.1 | non-displaced [<i>KN I</i>] ^a | 251800.2 ^b | None | 5 |
| 251804.1 | displaced NFS ^a | 251800.2 ^b | None | 5 |
| 251806.1 | arch [<i>KN II</i>] ^a | 251800.2 ^b | None | 5 |
| 251808.1 | body ^a | 251800.2 ^b | None | 5 |
| 251810.1 | unrotated [<i>KN III</i>] ^a | 251800.2 ^b | None | 5 |
| 251812.1 | rotated [<i>KN IV, V</i>] ^a | 251800.2 ^b | None | 5 |
| 251814.2 | complex [<i>KN VI</i>] ^a | 251800.2 | None | 5 |
| 251900.3 | Panfacial fracture ^a | None | None | 3 |
| 251902.4 | blood loss >20% by volume ^a Multiple and complex fractures that may involve middle and lower face, upper and middle face or all three, but not LeFort fractures. | None | None | 3 |

^a New descriptor in AIS 2005

^b Change in severity code in AIS 2005

