

# THORAX

AIS 2005	Injury Description	⇒AIS98	⇐AIS98	FCI
<b>WHOLE AREA</b>				
<b>Use one of the following two descriptors when such vague information is the only information available. While these descriptors identify the occurrence of a thoracic injury, they do not specify its severity.</b>				
400099.9	<b>Injuries to the Whole Thorax NFS</b>	415099.9	415099.9	
400999.9	Died of thoracic injury without further substantiation of injuries or no autopsy confirmation of specific injuries	415999.9	415999.9	
411000.2	<b>Breast avulsion, female</b>	411000.2	411000.2	5
413000.6	<b>Crush injury</b>	413000.6	413000.6	1
<b>Must involve massive bilateral destruction of skeletal, vascular, organ and tissue systems.</b>				
415000.4	<b>Open (“sucking”) chest wound</b>	415000.4	415000.4	5
410102.2	<b>Pectoral muscle</b> tear; laceration <sup>a</sup>	410099.1	None	5
<b>Use this category if penetrating injury does not involve internal structures. Assign to External body region for calculating an ISS. If underlying anatomical structures are involved, code documented diagnoses only; do not use these generic descriptors.</b>				
416000.1	<b>Penetrating injury NFS</b>	416000.1	416000.1	5
416002.1	superficial; minor; into pleural cavity but not involving deeper structures	416002.1	416002.1	5
416004.2	with tissue loss >100cm <sup>2</sup>	416004.2	416004.2	5
416006.3	with blood loss >20% by volume	416006.3	416006.3	5

<sup>a</sup> New descriptor in AIS 2005

AIS 2005	Injury Description	⇒AIS98	⇐AIS98	FCI
<b>Use the following section for blunt soft tissue injury to the thorax. Assign to External body region for calculating an ISS. If injury is described as “degloving”, code as avulsion.</b>				
410099.1	<b>Skin/subcutaneous/muscle NFS</b>	410099.1	410099.1	5
410202.1	abrasion	410202.1	410202.1	5
410402.1	contusion; hematoma	410402.1	410402.1	5
410600.1	laceration NFS	410600.1	410600.1	5
410602.1	minor; superficial	410602.1	410602.1	5
410604.2	major; >20cm long <u>and</u> into subcutaneous tissue	410604.2	410604.2	5
410606.3	blood loss >20% by volume	410606.3	410606.3	5
410800.1	avulsion NFS	410800.1	410800.1	5
410802.1	minor; superficial; ≤100cm <sup>2</sup>	410802.1	410802.1	5
410804.2	major; >100cm <sup>2</sup>	410804.2	410804.2	5
410806.3	blood loss >20% by volume	410806.3	410806.3	5
<b>VESSELS</b>				
<b>Vessel injuries are coded separately from other injuries to the chest, except for crush injury which includes all injuries to the chest.</b>				
420099.9	<b>Vascular Injury in Thorax NFS<sup>†</sup></b>	None	None	
420299.4	<b>Aorta, thoracic NFS [OIS IV or V for entire category unless stated otherwise]</b>	420299.4	420299.4	5
420202.4	intimal tear, no disruption	420202.4	420202.4	5
420204.5	with aortic valve involvement	420204.5	420204.5	5
420206.4	laceration; perforation; puncture NFS	420206.4	420206.4	5
420208.4	minor; superficial; incomplete circumferential involvement; blood loss ≤20% by volume	420208.4	420208.4	5
420210.5	major; rupture; transection; segmental loss; blood loss >20% by volume	420210.5	420210.5	5
420212.5	with aortic root or valve involvement	420212.5	420212.5	5
420216.5	with hemorrhage confined to mediastinum	420216.5	420216.5	5
420218.6	with hemorrhage not confined to mediastinum [OIS VI]	420218.6	420218.6	1

<sup>†</sup> New descriptor in AIS 2005 that allows classification of trauma by body region, but does not allow assigning a severity code.

<b>AIS 2005</b>	<b>Injury Description</b>	<b>⇒AIS98</b>	<b>⇐AIS98</b>	<b>FCI</b>
420499.3	<b>Brachiocephalic (innominate) artery</b> NFS [ <i>OIS III</i> for entire category]	420499.3	420499.3	5
420402.3	intimal tear, no disruption	420402.3	420402.3	5
420404.3	laceration; perforation; puncture NFS	420404.3	420404.3	5
420406.3	minor; superficial; incomplete circumferential involvement; blood loss ≤20% by volume	420406.3	420406.3	5
420408.4	major; rupture; transection; segmental loss; blood loss >20% by volume	420408.4	420408.4	5
420800.5	<b>Coronary artery</b> laceration or thrombosis to left main, right main or left anterior descending artery; coronary sinus	420800.5	420800.5	2
421099.3	<b>Pulmonary artery</b> NFS [ <i>OIS IV, V</i> for entire category]	421099.3	421099.3	5
421002.3	intimal tear, no disruption	421002.3	421002.3	5
421004.3	laceration; perforation; puncture NFS	421004.3	421004.3	5
421006.3	minor; superficial; incomplete circumferential involvement; blood loss ≤20% by volume	421006.3	421006.3	5
421008.5	major; rupture; transection; segmental loss; blood loss >20% by volume	421008.4 <sup>b</sup>	421008.4 <sup>b</sup>	5
421009.6	bilateral <sup>c</sup>	421008.4 <sup>b</sup>	None	1
421499.3	<b>Subclavian artery</b> NFS [ <i>OIS III</i> for entire category]	421499.3	421499.3	5
421402.3	intimal tear, no disruption	421402.3	421402.3	5
421404.3	laceration; perforation; puncture NFS	421404.3	421404.3	5
421406.3	minor; superficial; incomplete circumferential involvement; blood loss ≤20% by volume	421406.3	421406.3	5
421408.4	major; rupture; transection; segmental loss; blood loss >20% by volume	421408.4	421408.4	5
422099.2	<b>Other named arteries e.g., bronchial, esophageal, intercostal, internal mammary</b> NFS [ <i>OIS I</i> for entire category]	422099.2	422099.2	5
422002.2	intimal tear, no disruption	422002.2	422002.2	5
422004.2	laceration; perforation; puncture NFS	422004.2	422004.2	5
422006.2	minor; superficial; incomplete circumferential involvement; blood loss ≤20% by volume	422006.2	422006.2	5
422008.3	major; rupture; transection; segmental loss; blood loss >20% by volume	422008.3	422008.3	5

<sup>b</sup> Change in severity in AIS 2005

<sup>c</sup> In previous editions of AIS, each injury was coded separately. AIS 2005 introduces “bilateral” for certain injury descriptions. Some bilateral injuries may affect severity levels and, therefore, the ISS for patients with those injuries.

AIS 2005	Injury Description	⇒AIS98	⇐AIS98	FCI
420699.3	<b>Brachiocephalic (innominate) vein</b> NFS [ <i>OIS II</i> for entire category]	420699.3	420699.3	5
420602.3	laceration; perforation; puncture NFS	420602.3	420602.3	5
420604.3	minor; superficial; incomplete circumferential involvement; blood loss ≤20% by volume	420604.3	420604.3	5
420606.4	major; rupture; transection; segmental loss; blood loss >20% by volume	420606.4	420606.4	5
420608.5	with air embolus right side	420608.5	420608.5	5
421299.3	<b>Pulmonary vein</b> NFS [ <i>OIS IV, V</i> for entire category]	421299.3	421299.3	5
421202.3	laceration; perforation; puncture NFS	421202.3	421202.3	5
421204.3	minor; superficial; incomplete circumferential involvement; blood loss ≤20% by volume	421204.3	421204.3	5
421206.5	major; rupture; transection; segmental loss; blood loss >20% by volume	421206.4 <sup>b</sup>	421206.4 <sup>b</sup>	5
421207.6	bilateral <sup>c</sup>	421206.4 <sup>b</sup>	None	1
421699.3	<b>Subclavian vein</b> NFS [ <i>OIS II</i> for entire category]	421699.3	421699.3	5
421602.3	laceration; perforation; puncture NFS	421602.3	421602.3	5
421604.3	minor; superficial; incomplete circumferential involvement; blood loss ≤20% by volume	421604.3	421604.3	5
421606.4	major; rupture; transection; segmental loss; blood loss >20% by volume	421606.4	421606.4	5
421899.3	<b>Vena Cava, superior and thoracic portion of inferior,</b> NFS [ <i>OIS IV, V</i> for entire category]	421899.3	421899.3	5
421802.3	laceration; perforation; puncture NFS	421802.3	421802.3	5
421804.3	minor; superficial; incomplete circumferential involvement; blood loss ≤20% by volume with or without thrombosis	421804.3	421804.3	5
421806.4	major; rupture; transection; segmental loss; blood loss >20% by volume	421806.4	421806.4	5
421808.5	with air embolus right side	421808.5	421808.5	5
422299.2	<b>Other named veins, e.g., azygos, bronchial, esophageal, hemiazygos, intercostal, internal jugular, internal mammary</b> [ <i>OIS I</i> for entire category except <b>azygos and internal jugular</b> , <i>OIS II</i> ]	422299.2	422299.2	5
422202.2	laceration; perforation; puncture NFS	422202.2	422202.2	5
422204.2	minor; superficial; incomplete circumferential involvement; blood loss ≤20% by volume	422204.2	422204.2	5
422206.3	major; rupture; transection; segmental loss; blood loss >20% by volume	422206.3	422206.3	5

<sup>b</sup> Change in severity in AIS 2005

<sup>c</sup> In previous editions of AIS, each injury was coded separately. AIS 2005 introduces “bilateral” for certain injuries. Some bilateral injuries may affect severity levels and, therefore, the ISS for patients with those injuries.

AIS 2005	Injury Description	⇒AIS98	⇐AIS98	FCI
	<b>NERVES</b>			
430499.1	Vagus nerve injury See also Head, Neck and Abdomen body regions.	430499.1	430499.1	5

#### CODING RULES: Thorax

##### Organ Injury Scales (OIS)

The organ injury grading system may be helpful in determining injury severity, but the grades should not be used as a substitute for clinical descriptions of injuries. For example, specific information recorded in the hospital chart about depth of laceration, vessel involvement or extent of penetration associated with an organ injury should take precedence over a surgeon's designation of a particular OIS grade for the injury. If no relevant detailed descriptive clinical information is available, however, it is reasonable to rely on the OIS grade recorded.

##### Multiple Trauma

Each documented diagnosis is assigned a separate AIS code. For example, if a patient sustains a left lung contusion, hemothorax and multiple rib fractures and all three diagnoses are substantiated, the appropriate codes are: lung contusion, unilateral NFS, 441406.2; hemothorax NFS, 442200.3; multiple rib fractures NFS, 450210.2.

##### Penetrating Injuries

An injury that penetrates the torso with both entry and exit wounds (i.e., through and through injury), but does not injure any internal anatomical structure is coded as a soft tissue injury under the Whole Area. If underlying structures or organs are injured, these are coded and not the soft tissue injury.

AIS 2005	Injury Description	⇒AIS98	⇐AIS98	FCI
<b>INTERNAL ORGANS</b>				
440099.9	<b>Bronchus injury</b> NFS <sup>f</sup>	None	None	
440199.3	<b>Bronchus, main stem,</b> NFS <sup>l</sup>	442699.3	442699.3	5
440102.3	contusion; hematoma	442602.3	442602.3	5
440104.3	laceration; tear NFS	442604.3	442604.3	5
440106.3	no perforation; partial thickness	442606.3	442606.3	5
440108.4	perforation; full thickness; "fracture"	442608.4	442608.4 <sup>m</sup>	5
440110.5	complex; avulsion; rupture; transection; with separation	442610.5	442610.5 <sup>n</sup>	5
440299.1	<b>Bronchus, distal to main stem</b> NFS	440299.1	440299.1	5
440202.1	contusion; hematoma	440202.1	440202.1	5
440204.2	laceration; tear NFS	440204.2	440204.2	5
440206.2	no perforation; partial thickness	440206.2	440206.2	5
440208.3	perforation; full thickness; "fracture"	440208.3	440208.3 <sup>o</sup>	5
440210.4	complex; avulsion; rupture; transection; with separation	440210.4	440210.4 <sup>p</sup>	5
440699.2	<b>Diaphragm</b> NFS	440699.2	440699.2	5
440602.2	contusion; hematoma [OIS I]	440602.2	440602.2	5
440604.2	laceration NFS <sup>e</sup>	440604.3 <sup>b</sup>	440604.3 <sup>b</sup>	5
440606.3	≤10cm [OIS II, III]	440604.3	None	5
440608.4	>10cm; with significant tissue loss [OIS IV, V]	440604.3 <sup>b</sup>	None	5
440610.4	rupture with herniation	440606.4	440606.4	5

<sup>b</sup> Change in severity in AIS 2005

<sup>e</sup> In AIS 98, this injury description had only one severity level; in AIS 2005, it has several.

<sup>f</sup> New descriptor in AIS 2005 that allows classification of trauma by body region, but does not allow assigning a severity code.

<sup>l</sup> Trachea and Main Stem Bronchus were combined as one descriptor in AIS 98. In AIS 2005, each is a separate category; hence, the duplication of AIS 98 matching codes.

<sup>m</sup> Also matches with 442612.4 and 442614.4 in AIS 98

<sup>n</sup> Also matches with 442616.5 in AIS 98

<sup>o</sup> Also matches with 440212.3 and 440214.3 in AIS 98

<sup>p</sup> Also matches with 440216.4 in AIS 98

AIS 2005	Injury Description	⇒AIS98	⇐AIS98	FCI
440899.2	<b>Esophagus injury in Thorax NFS</b>	440899.2	440899.2	5
	<b>See also Neck body region. Code to Neck if site NFS. If injury occurs at junction of neck and thorax (i.e., at sternal notch), assign to Neck.</b>			
440802.2	contusion; hematoma [OIS I]	440802.2	440802.2	5
440805.3	ingestion injury NFS <sup>a</sup>	440899.2 <sup>b</sup>	None	5
440807.3	partial-thickness necrosis <sup>a</sup>	440899.2 <sup>b</sup>	None	5
440809.4	full-thickness necrosis <sup>a</sup>	440899.2 <sup>b</sup>	None	3
440804.3	laceration; tear NFS	440804.3	440804.3	5
440806.3	no perforation; partial thickness; ≤50% circumference [OIS I, II]	440806.3	440806.3	5
440808.4	perforation; full thickness; >50% circumference [OIS III]	440808.4	440808.4	5
440810.5	avulsion; rupture; transection; massive destruction [OIS IV, V]	440810.5	440810.5	3
441099.1	<b>Heart (Myocardium) injury NFS</b>	441099.1	441099.1	5
441089.9	with cardiac arrest NFS <sup>f</sup>	None	None	
441002.1	contusion NFS	441002.1	441002.1	5
441004.1	minor [OIS I]	441004.1	441004.1	5
	<b>Patients presenting with dysrhythmia, wall motion abnormality, other ECG changes not related to CAD.</b>			
441006.4	major	441006.4	441006.4	5
	<b>Must be substantiated e.g., by surgery, autopsy, EF&lt;25% absent CAD.</b>			
441008.3	laceration NFS	441008.3	441008.3	5
441010.3	no perforation; no chamber involvement	441010.3	441010.3	5
441012.5	perforation, ventricular or atrial, with or without tamponade	441012.5	441012.5	5
441013.5	atrial rupture <sup>a</sup>	None	None	5
441014.6	ventricular rupture	441014.6	441014.6	1
441016.6	multiple lacerations; >50% tissue loss of a chamber	441016.6	441016.6	1
441018.6	avulsion	441018.6	441018.6	1

<sup>a</sup> New descriptor in AIS 2005

<sup>b</sup> Change in severity in AIS 2005

<sup>f</sup> New descriptor in AIS 2005 that allows classification of trauma by body region but does not allow assigning a severity code.

AIS 2005	Injury Description	⇒AIS98	⇐AIS98	FCI
440400.5	<b>Intracardiac chordae tendineae</b> laceration; rupture	440400.5	440400.5	5
441300.5	<b>Intracardiac septum</b> laceration; rupture	441300.5	441300.5	4
441200.5	<b>Intracardiac valve</b> laceration; rupture	441200.5	441200.5	4
441499.3	<b>Lung NFS</b>	441499.3	441499.3	5
441420.3	blast injury (overpressure/explosive) NFS <sup>a</sup>	441499.3	None	5
441422.3	mild <sup>a</sup>	441499.3	None	5
441424.4	moderate; uni/bilateral with pulmonary peripheral hemorrhage <sup>a</sup>	441499.3 <sup>b</sup>	None	5
441426.5	severe; bilateral with air embolus <sup>a</sup>	441499.3 <sup>b</sup>	None	5
441402.3	contusion NFS	441402.3	441402.3	5
<b>Contusion should be coded only if there is history of chest trauma <u>and</u> a physician's diagnosis is documented by x-ray, CT, MRI, surgery or autopsy. Clinical pulmonary dysfunction (e.g., atelectasis or effusion) is insufficient evidence of a codeable injury.</b>				
441406.2	unilateral NFS <sup>e</sup>	441406.3 <sup>b</sup>	441406.3 <sup>b</sup>	5
441407.2	minor; <1 lobe	441406.3 <sup>b</sup>	None	5
441408.3	major; ≥1 lobe	441406.3	None	5
441410.3	bilateral NFS <sup>e</sup>	441410.4 <sup>b</sup>	441410.4 <sup>b</sup>	5
441411.3	minor; <1 lobe	441410.4 <sup>b</sup>	None	5
441412.4	major; ≥1 lobe in at least one lung	441410.4	None	5
441414.3	laceration NFS	441414.3	441414.3	5
441430.3	unilateral NFS <sup>e</sup>	441430.3	441430.3	5
441431.3	minor; <1 lobe	441430.3	None	5
441432.4	major; ≥1 lobe	441430.3 <sup>b</sup>	None	5
441450.4	bilateral NFS <sup>e</sup>	441450.4	441450.4	5
441451.4	minor; <1 lobe	441450.4	None	5
441452.5	major; ≥1 lobe in at least one lung	441450.4 <sup>b</sup>	None	5

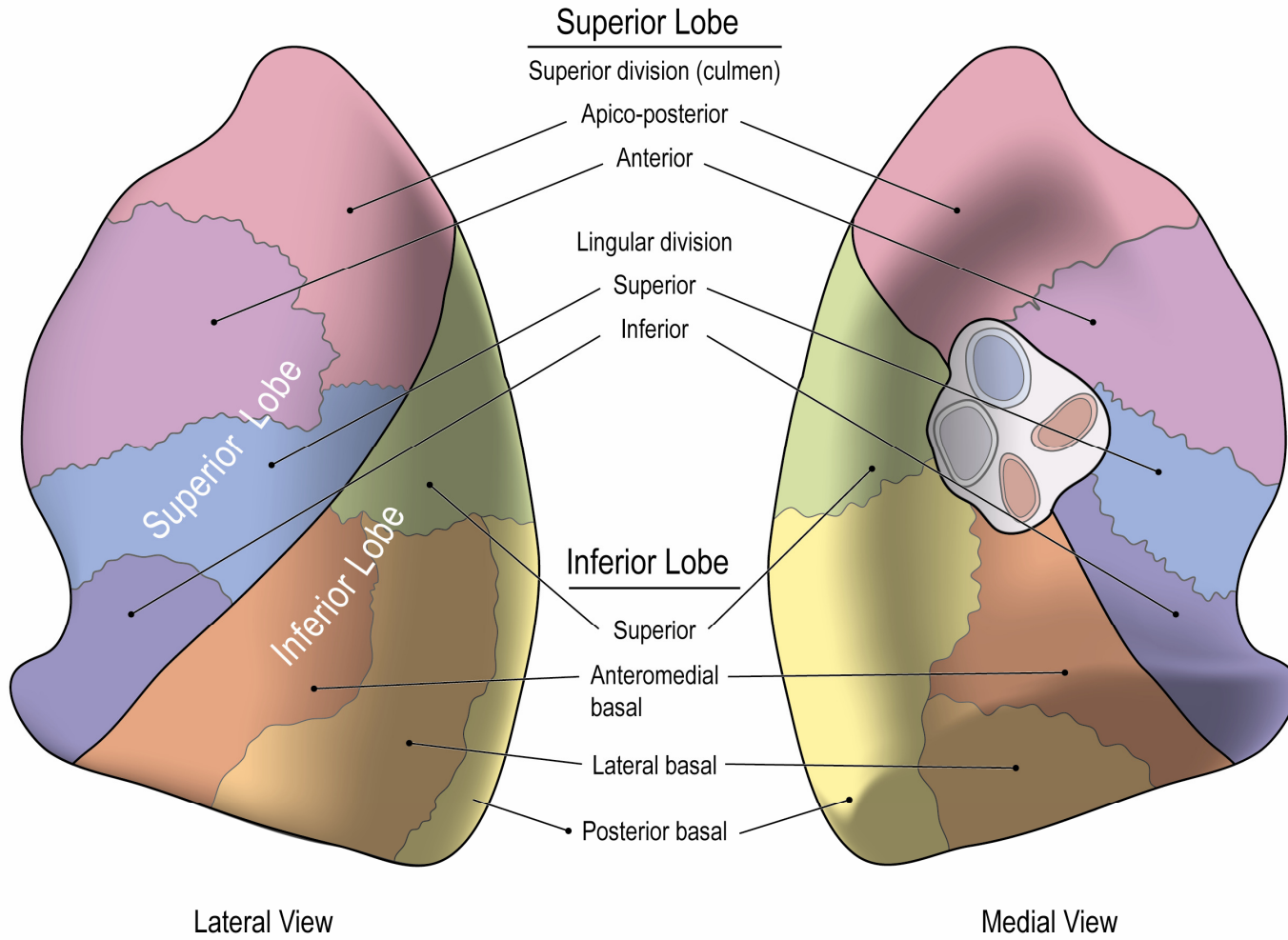
<sup>a</sup> New descriptor in AIS 2005

<sup>b</sup> Change in severity in AIS 2005

<sup>e</sup> In AIS 98, this injury description had only one severity level; in AIS 2005, it has several.



# Left Lung



© BRC 2005

AIS 2005	Injury Description	⇒AIS98	⇐AIS98	FCI
	<b>Lung</b> (continued)			
419200.2	inhalation injury NFS (heat, particulate matter, noxious agents)	919200.2	919200.2	5
	<b>Any one or combination of conditions may be present in the following injury descriptors.</b>			
419201.2	absence of carbonaceous deposits, erythema, edema, bronchorrhea, obstruction	919201.2	919201.2	5
419202.3	minor or patchy areas of erythema, bronchorrhea, carbonaceous deposits in proximal or distal bronchi	919202.3	919202.3	5
419204.4	moderate degree of erythema, carbonaceous deposits, bronchorrhea with or without compromise of the bronchi	919204.4	919204.4	5
419206.5	severe inflammation with friability, copious carbonaceous deposits, bronchorrhea, bronchial obstruction, hypoxemia	919206.5	919206.5	5
419208.6	evidence of mucosal sloughing, necrosis, endoluminal obliteration	919208.6	919208.6	1
441699.2	<b>Pericardium</b> NFS	441699.2	441699.2	5
441602.2	laceration; puncture	441602.2	441602.2	5
441603.3	hemopericardium NFS <sup>a</sup>	441699.2 <sup>b</sup>	None	5
441604.3	without cardiac tamponade or heart injury <sup>a</sup>	441699.2 <sup>b</sup>	None	5
441605.4	with cardiac tamponade but without heart injury	441604.3 <sup>b</sup>	441604.3 <sup>b</sup>	5
441606.5	herniation of heart through pericardium	441606.5	441606.5	5
441800.2	<b>Pleura</b> laceration	441800.2	441800.2	5

<sup>a</sup> New descriptors in AIS 2005

<sup>b</sup> Change in severity in AIS 2005

AIS 2005	Injury Description	⇒AIS98	⇐AIS98	FCI
<b>Code the following types of thoracic trauma separate from and in addition to all documented thoracic injuries.</b>				
442999.9	<b>Thoracic injury NFS</b>	442999.9	442999.9	
442200.3	<b>Hemothorax NFS<sup>q</sup></b>	442202.3	442202.3	5
442201.4	major; >1000cc blood loss on at least one side	442208.4	442208.4	5
442202.2	<b>Pneumothorax NFS<sup>q</sup></b>	442202.3 <sup>b</sup>	442202.3 <sup>b</sup>	5
442203.4	major; >50% collapse of lung documented on xray; persistent air leak	442202.3 <sup>b</sup>	None	5
442204.5	tension; massive air leak	442210.5	442210.5	5
442205.3	<b>Hemopneumothorax NFS</b>	442202.3	442202.3	5
442206.4	major; >1000cc blood loss on at least one side <sup>a</sup>	442202.3 <sup>b</sup>	None	5
442207.5	<b>Air Embolus</b>	442212.5	442212.5	5
442208.2	<b>Hemomediastinum</b>	442206.4 <sup>b</sup>	442206.4 <sup>b</sup>	5
442209.2	<b>Pneumomediastinum</b>	442204.3 <sup>b</sup>	442204.3 <sup>b</sup>	5
442210.3	with cardiac tamponade <sup>a</sup>	442204.3	None	5
442402.2	<b>Thoracic duct</b> laceration	442402.2	442402.2	5
442502.2	<b>Thymus</b> laceration; perforation <sup>a</sup>	None	None	5
442699.3	<b>Trachea injury in Thorax NFS<sup>l</sup></b>	442699.3	442699.3	5
<b>See also Neck body region. Code to Neck if site NFS. If injury occurs at junction of neck and thorax (e.g., at sternal notch), assign to Neck.</b>				
442602.3	contusion; hematoma	442602.3	442602.3	5
442604.3	laceration NFS	442604.3	442604.3	5
442606.3	no perforation; partial thickness	442606.3	442606.3	5
442608.4	perforation; full thickness; "fracture"	442608.4 <sup>m</sup>	442608.4 <sup>m</sup>	5
442610.5	avulsion; rupture; transection; massive destruction; crush; laryngeal-tracheal separation	442610.5 <sup>n</sup>	442610.5 <sup>n</sup>	4

<sup>a</sup> New descriptor in AIS 2005

<sup>b</sup> Change in AIS 2005

<sup>l</sup> Trachea and Main Stem Bronchus were combined as one descriptor in AIS 98. In AIS 2005, each is a separate category; hence, the duplication of AIS 98 matching codes.

<sup>m</sup> Also matches with 442612.4 or 442614.4 in AIS 98.

<sup>n</sup> Also matches with 442616.5 in AIS 98.

<sup>q</sup> Hemo/pneumothorax were combined as one descriptor in AIS 98. In AIS 2005, each is a separate category; hence, the duplication of AIS 98 matching codes.

**CODING RULES: Rib Fractures**

The rib cage is treated as a single anatomical structure for coding fractures without flail and for bilateral flail. However, if a flail chest is documented on one side (unilateral) and fractured ribs without flail are documented on the other side, code as two separate injuries.

“Flail chest” is defined as three or more ribs fractured in more than one location (e.g., posterolateral and anterolateral) and/or resulting in paradoxical chest movement.

Multiple rib fractures, if documented but not further described, should be assigned 450210.2.

Costal cartilage fracture or tear is coded as a rib fracture.

For patients who die before any radiology is done and no autopsy is performed, a clinical diagnosis of multiple rib fractures made by detecting thoracic cage instability is acceptable for AIS coding. In such cases, use AIS code 450210.2. However, clinically diagnosed rib fractures in survivors are never coded; these must be substantiated radiologically.

**SKELETAL including thoracic wall involvement**

450299.1	<b>Rib Cage</b> NFS	450299.1	450299.1	5
450289.1	contusion	450202.1	450202.1	
<b>Read “Rib Fractures” for coding rules.</b>				
450210.2	multiple rib fractures NFS	450210.2	450210.2	5
450200.1	fracture(s) without flail, any location unilateral or bilateral NFS	450212.1	450212.1	5
450201.1	one rib [ <i>OIS I</i> ]	450212.1	450212.1	5
450202.2	two ribs [ <i>OIS I</i> ]	450220.2	450220.2	5
450203.3	≥3 ribs [ <i>OIS II</i> ]	450230.3	450230.3	5
450209.3	fractures with flail, NFS	450260.3	450260.3	5
450211.3	unilateral flail chest NFS [ <i>OIS IV</i> ]	450260.3	450260.3	5
450212.3	3-5 flail ribs [ <i>OIS IV</i> ]	450260.3	None	5
450213.4	>5 flail ribs [ <i>OIS IV</i> ]	450260.3 <sup>b</sup>	None	5
450214.5	bilateral flail chest [ <i>OIS V</i> ]	450266.5	450266.5	5
450899.1	<b>Sternum</b> NFS	450899.1	450899.1	5
450802.1	contusion	450802.1	450802.1	5
450804.2	fracture [ <i>OIS II, III</i> ]	450804.2	450804.2	5
451099.1	<b>Thoracic Wall</b> NFS <sup>a</sup>	None	None	5
451020.4	avulsion of chest wall tissues including rib cage [ <i>OIS IV</i> for entire category] <sup>a</sup>	None	None	5
451021.4	minor; ≤15% of chest wall including rib cage <sup>a</sup>	None	None	5
451022.5	major; >15% of chest wall including rib cage <sup>a</sup>	None	None	5

<sup>a</sup> New descriptor in AIS 2005

<sup>b</sup> Change in severity in AIS 2005